



Forward Thinking. High Achieving.

RUSSELL ELEMENTARY SCHOOL

Our proposal addresses critical needs, including adequate classroom space, dynamic learning environments, and safety for students, staff and community traffic.



A systemwide initiative to develop schools that work smarter for our students.

MEET YOUR SMART SCHOOLS TEAM

The Russell Elementary School team put months into this process. We appreciate the input from students, parents, faculty, neighbors and the MCPS board. If you have questions or would like to get involved, we encourage you to visit www.mcpsmt.org/russell or contact Principal Cindy Christensen at cchristensen@mcps.k12.mt.us.

TEAM MEMBER CORE

Quentin Schraeder, Student
Sarah Mueller, Student
Rob Henthorn, Teacher
Patti Beckley, Teacher
Dan Falldorf, Classified
Saundra Long, Classified
Cindy Christensen, Administrator
Aaron Koepke, Parent
Cindy Chumrau, Classified
Cindy Northey, Community

21ST CENTURY NEEDS

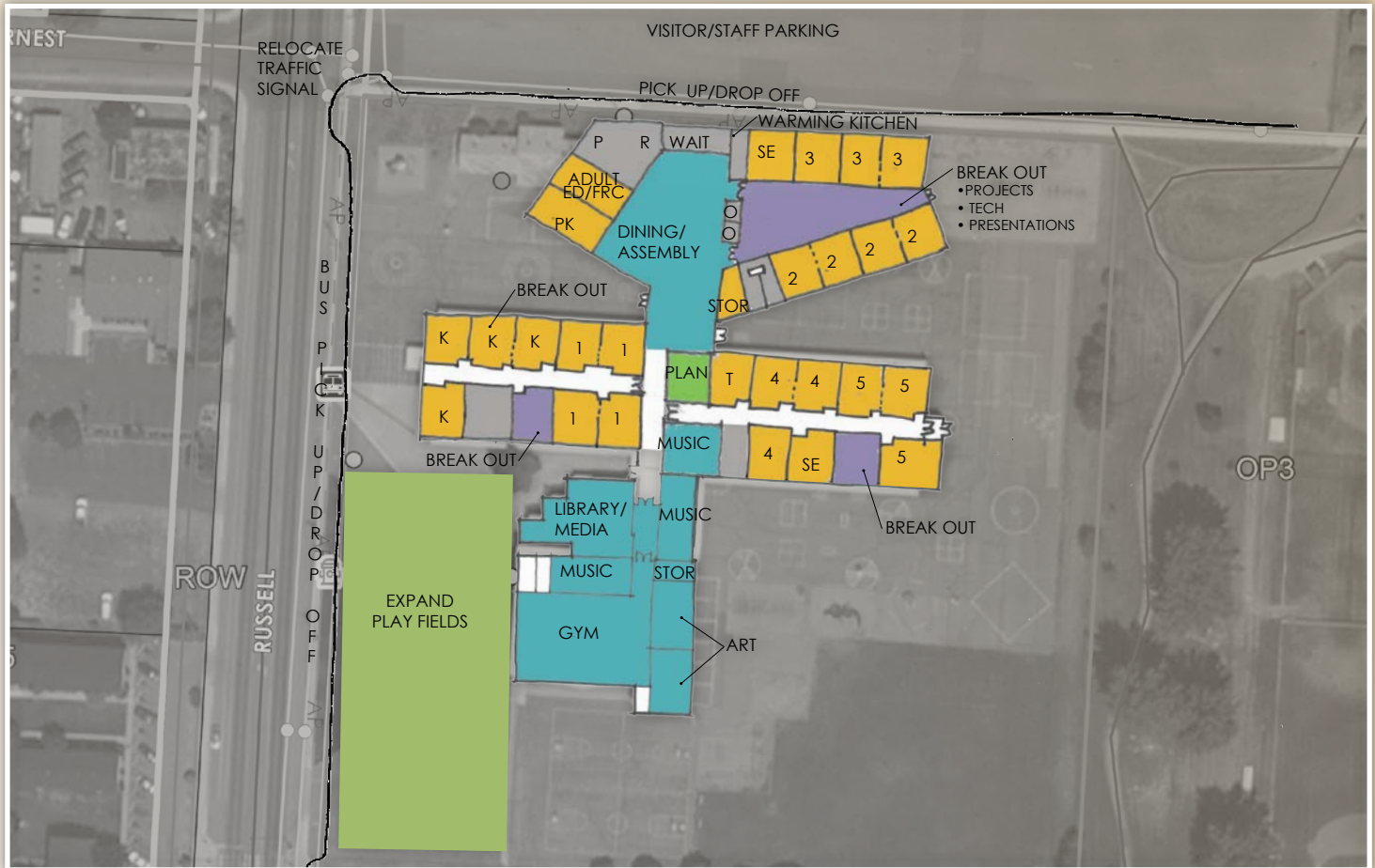
Russell Elementary School, constructed in 1960, added two annexes 14 years later. With enrollment averaging between 350 –370 students and housing school district programs, the infrastructure is well past overcapacity. Security and safety concerns continue with an ineffective building intercom system, technology concerns and disconnected annexes.

EXPANDING RUSSELL ELEMENTARY SCHOOL

Our proposed option to expand Russell School will serve students, families and staff, and will facilitate 21st-century teaching and learning. When complete, Russell will be a smarter school in many ways, including safety, security and increased functionality:

- One building for all students and staff, offering a greater sense of both security and community.
- Lunchroom separate from the gymnasium, where students can take the necessary time needed to eat lunch and socialize.
- Collaboration spaces for students, teachers and parents.
- An obvious main entry and secure waiting area.
- Dynamic technology options for classes and staff through high-speed/high-volume fiber optic distribution and enhanced robust wireless and hard-wired access points.
- Acoustical materials between learning areas and breakout areas improve sound control.
- Reconfigured north parking lot.
- Expanded playfields.





OUR TEAM'S RECOMMENDED OPTION



OPTION E-1 EXPAND:

- Expand school to north.
- Reconfigure north parking lot for pickup / drop-off.

SECURITY

Modify facility to create obvious main entry, secure waiting area and ability to observe visitors approaching the building. Subdivide the building into secure zones with electronically activated door closers.

TECHNOLOGY

Develop high-speed/high-volume fiber optic distribution to breakout spaces for projects, presentations and technology in each learning community, enhanced with robust wireless and hard-wired access points.

ENVIRONMENT

Install barn doors and garage doors with quality acoustical materials between learning areas and breakout areas for projects, presentations and technology. Create small learning communities for teams of teachers and students that include traditional classrooms as well as important support spaces for 1:1 tutoring, small groups, planning centers, storage, etc.

FACILITIES STRATEGIC PLAN

Site Area: 5.96 acres

Parking spaces: 20

Building Square Footage

Existing: 48,777

Demolish: 5,784

New: 12,000

Total Project Cost: \$4,730,453

Replacement Cost: \$11,857,795

Remaining Deferred Maintenance & Energy Project Costs: \$0

Rental / Lease / Sale Income: None

Current Enrollment: 370

Future Peak Enrollment: 413

Capacity: 450-500

Accessible Capacity: 450-500

Accessible / Permanent Capacity: 450-500

Costs include construction, demolition (where applicable), technology, furnishings, site development, design fees, and acquisition (where applicable). Contingency and escalation to January 2020.



NOW IS THE TIME TO INVEST IN SMARTER SCHOOLS

Education has never been more important than it is today. Our students face international competition for scholarships and jobs, and an increasing pace of change that impacts their futures. Yet, while the need for quality education continues to increase, our schools are physically in decline.

At Missoula County Public Schools, we realize that we must change if we're to keep up academically and economically as a community. That's why we launched Smart Schools 2020. Led by teams from each school, the initiative assesses needs by facility and prioritizes those needs in light of achieving our goals of a 21st Century Educational Culture and of being fiscally responsible.

By addressing schools now we prevent further deterioration of facilities, better prepare for population growth and ensure our students continue to get the educational opportunities they need to succeed in school and beyond.

THE SMART SCHOOLS PROCESS

SCHOOL CENTRIC:

Criteria and preferred options were established for each school by a team of teachers, administrators, students and parents from that school, along with members of the Missoula community.

COLLABORATIVE:

Alternatives were shared at public meetings at each school. In addition, surveys were sent out systemwide to vet priorities.

REALISTIC:

Team recommendations will be reviewed by the steering committee and the elected board of trustees before a bond measure is drafted.

PUBLIC:

Everyone is invited to review options and weigh in. Final support for the initiative will be determined by public election in November 2015.



To get involved, please visit www.mcpsmt.org/russell or contact Principal Cindy Christensen at cchristensen@mcps.k12.mt.us.